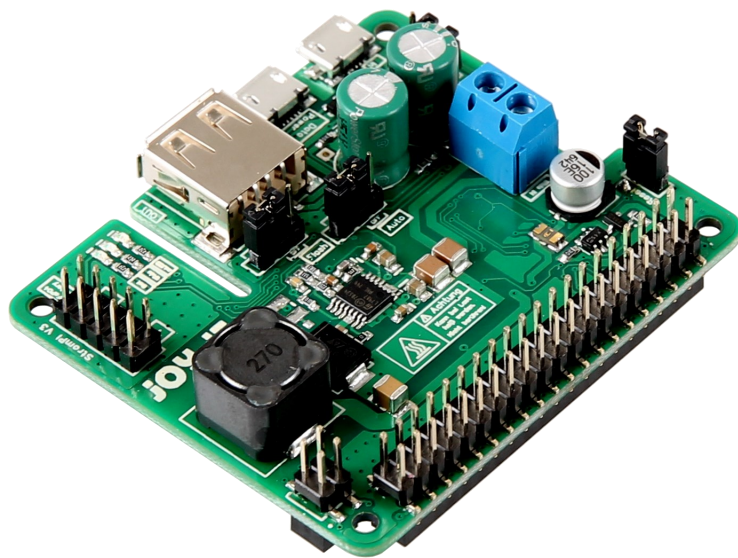


# JOY-IT



## StromPi 3 PowerOn-Button Manual

## 1. INTRODUCTION

---

This manual shows how to modify the StromPi v3 to restart it after a „poweroff“ command, without having to unplug nor removing the BatteryHAT.

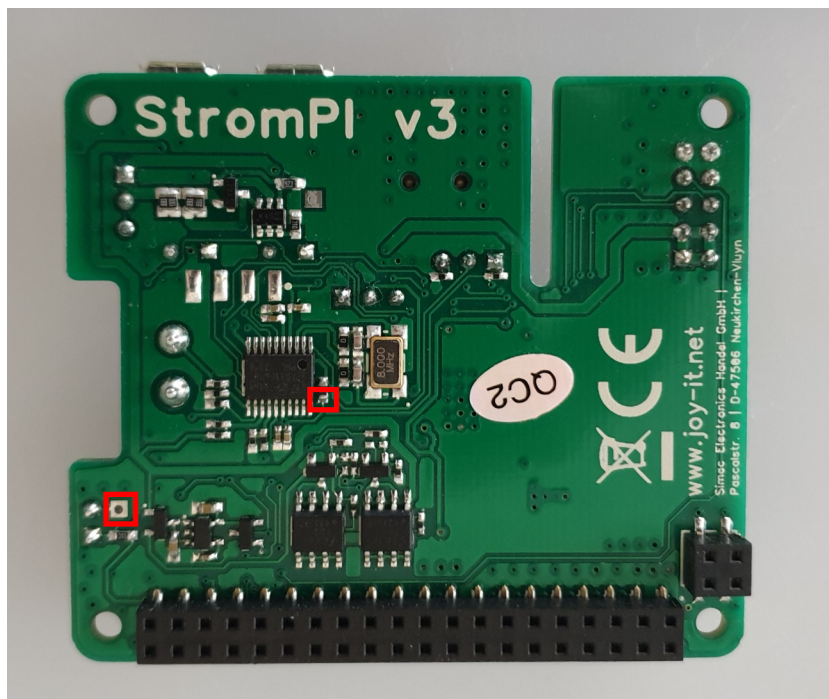
For this is just one little modification necessary. Two solderpads need to be bridged with a wire. After this modification it is possible to restart the StromPi v3 by bridging the reset pin.

In case that the StromPi v3 is already modified for the use of the serial-less mode or the StromPi v3 should be used in serial-less mode, one more little modification is necessary.

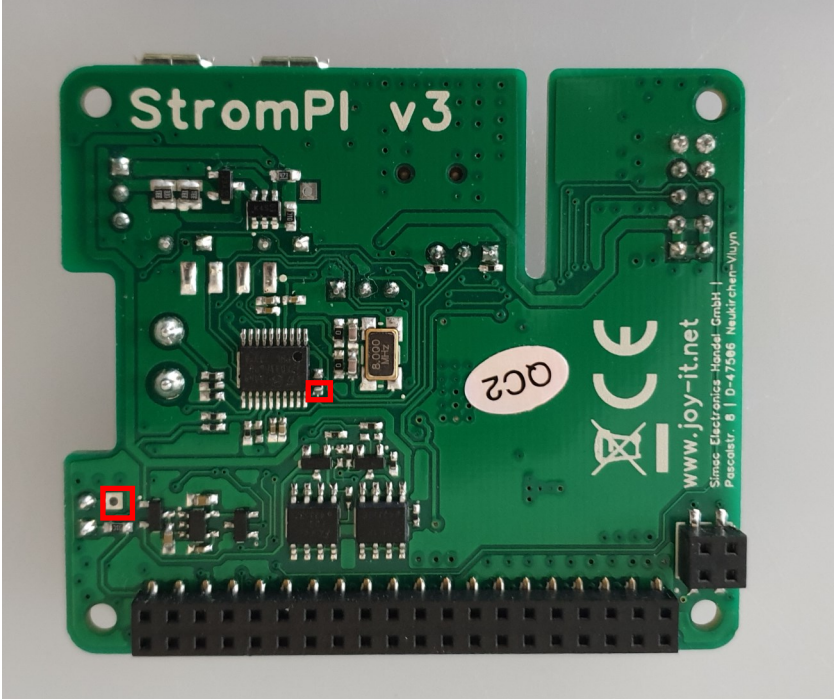
**IMPORTANT:** There must be at least 30 seconds between „poweroff“ and restart.

## 2. RESTART MODIFICATION

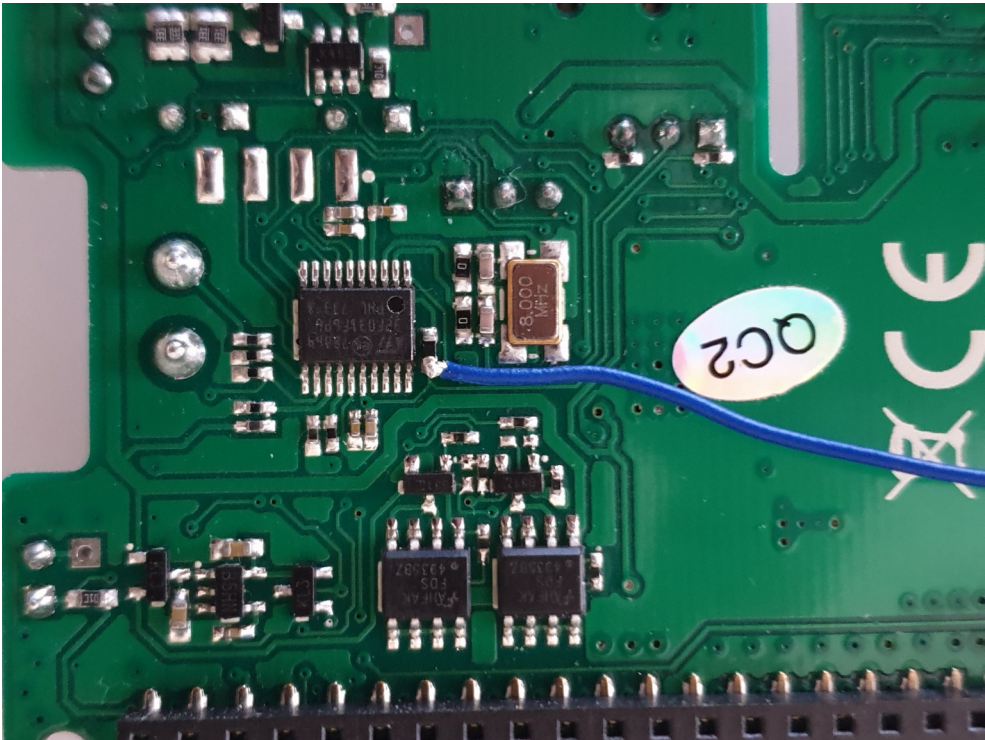
---



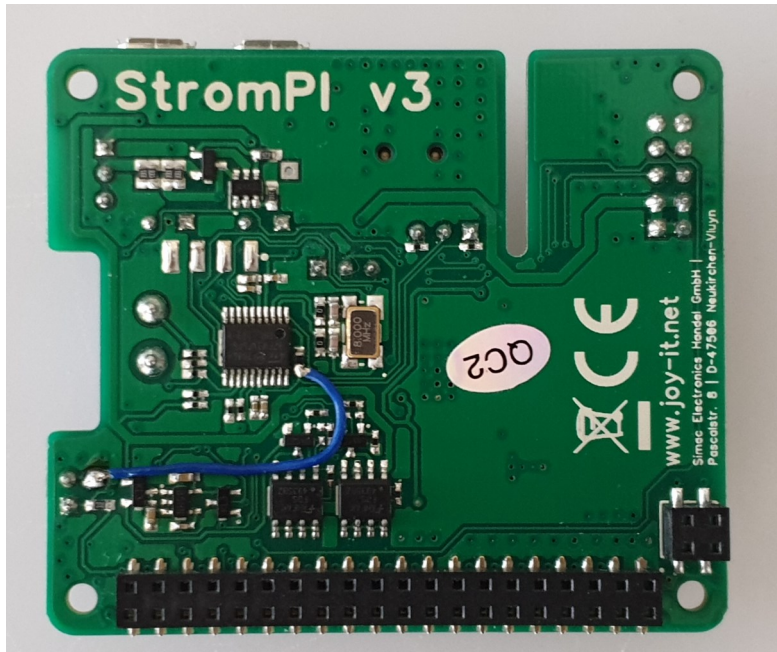
The red marked solder pads need to be bridged with a cable.



1. A little bit of solder needs to be applied to each solder pad.

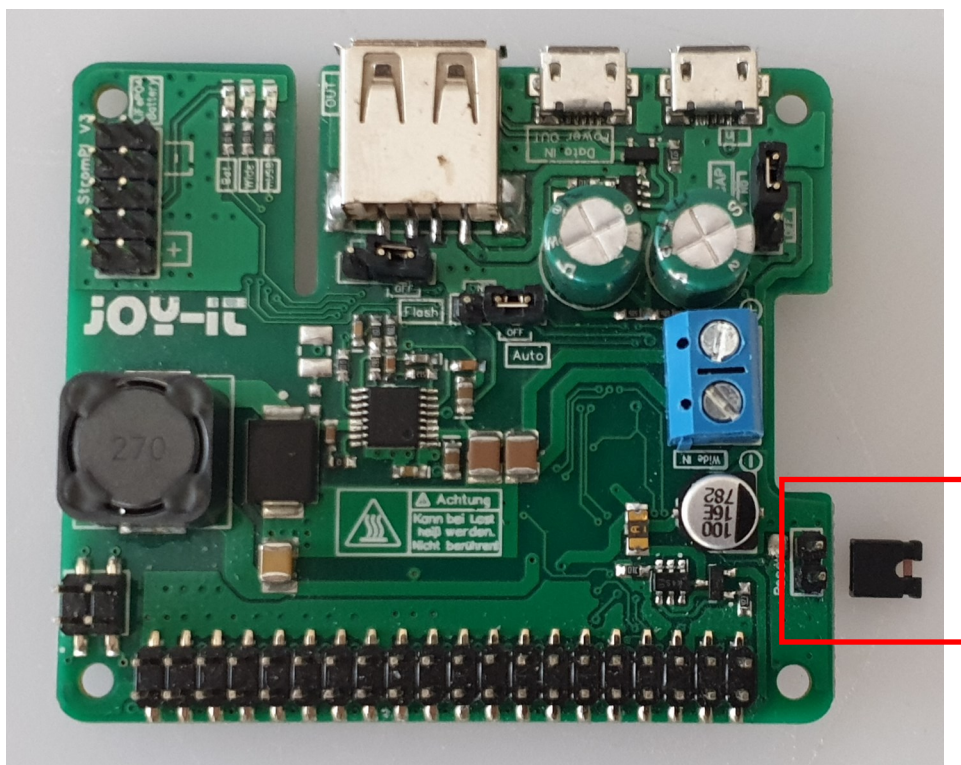


2. Solder the first end of the cable to the prepared solderpad.



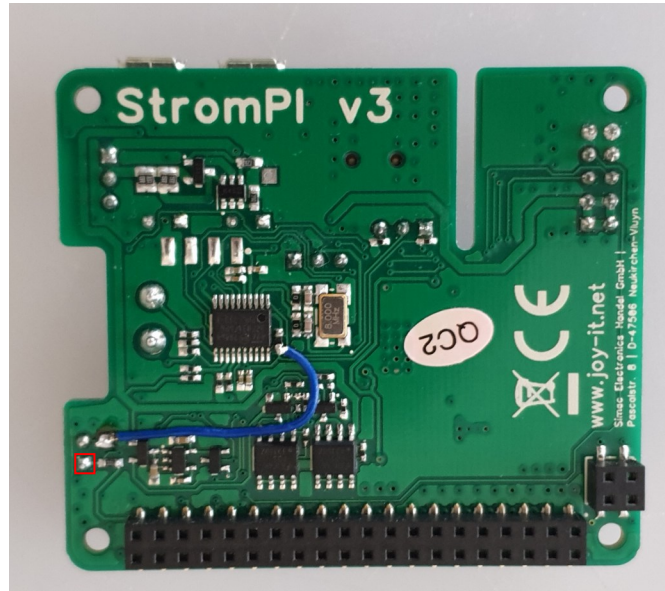
3. As last step the second end of the cable needs to be soldered to the other pad.

Now it's possible to restart the system after using the „poweroff“ command by shorting the red marked Reset pins. During operation the pins are not allowed to be connected. For more comfort it's possible to connect a „normally open“ switch to these pins.

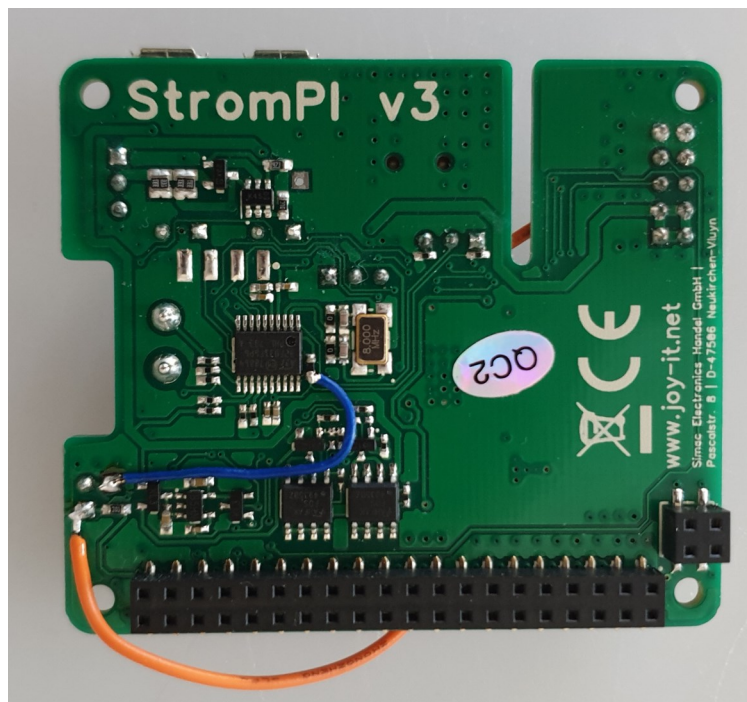


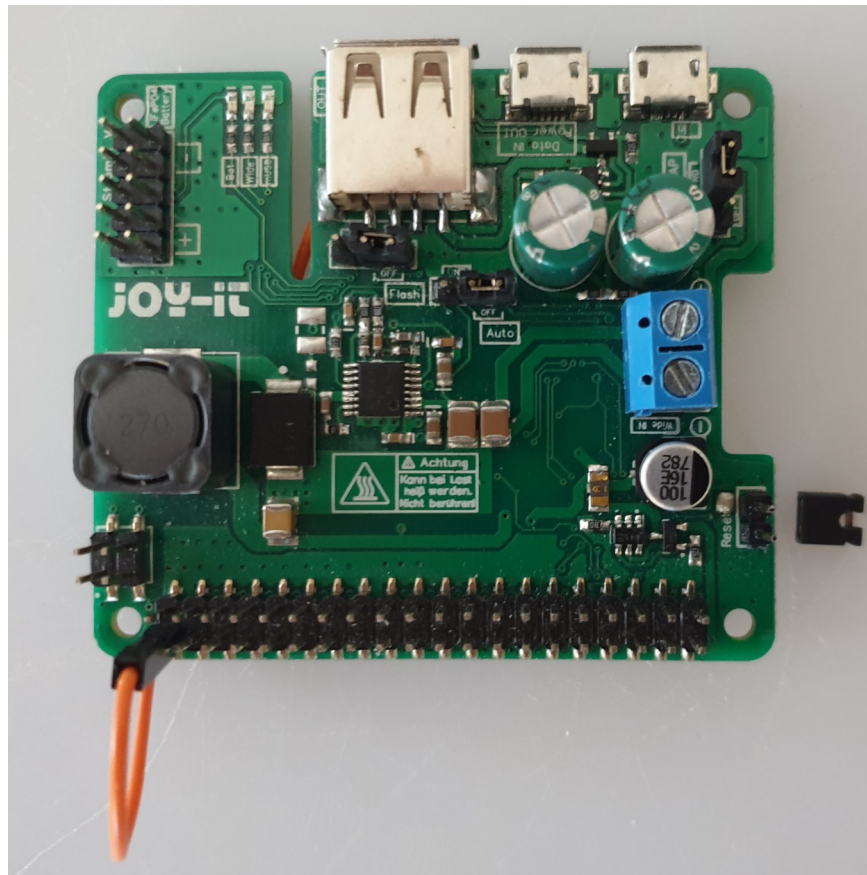
**IMPORTANT:** There must be at least 30 seconds between „poweroff“ and restart.

### 3. SERIAL-LESS + POWEROFF MODIFICATION



As the pad, which is usually used for the „serial-less“-modification, is already in use, the cable needs to be soldered to the red marked pin.





For more informations about the serial-less mode please read the serial-less manual, which can be found [here](#).

## 4. SUPPORT

---

We are also support you after your purchase. If you still have questions or problems, we are also available by e-mail, telephone and ticket support system.

E-Mail: [service@joy-it.net](mailto:service@joy-it.net)

Ticket-System: <http://support.joy-it.net>

Phone: +49 (0)2845 98469 – 66 (9:30 - 17:00 o'clock)

For further information please visit our website:

[www.joy-it.net](http://www.joy-it.net)